



## FREQUENTLY ASKED QUESTIONS

9/8/2011 Draft

### What's the mission of the Warren County Great Race?

To contribute to the general awesomeness of Warren County and support the Majengo Orphanage, through the irresponsible waste of company resources to create the best, wacky-fun, family-friendly, G-rated day of the year, for a select group of slightly off-balance people who subscribe to our modestly warped view of the world.

### What is the Great Race?

It's an awesome all-day immersive genetically enhanced scavenger hunt/puzzle/road trip on steroids, spanning all of Warren County.

### What is the date of this year's Great Race?

Saturday, September 10.

### Is it in any way an athletic "race," in the traditional sense?

No. It is a race only in the sense that you are "racing" against other teams to solve the puzzles and complete the day's challenges before any other teams. The physical and athletic requirements are pretty minimal.

### Is this a family-friendly event? Can kids participate?

Yes, and yes. We'll separately recognize the winning team from within the "**Families with Kids**" category (\$100 prize for first place). If your team includes at least one adult and one pre-teen you qualify for this category. Minors must have parental permission and a waiver signed by a parent. If your team would like to be included in this category you must state this when you check in.

### What about older folks?

Same deal. While there might be some physical components to some of the challenges, you don't need to be an Olympic class athlete to be competitive and have fun – plus you don't need to do anything you don't think you're up to. In the spirit of the previous question, we're also separately recognizing the "**Seniors**" category (\$100 prize for first place). If your team includes two or more members who are at least 60 years of age, or if your team feel they are of sufficiently advanced age as to warrant sympathetic treatment by inclusion in this category, and the Taskmaster checking you in on the morning doesn't challenge it, then you qualify. Again, you must indicate your interest in being included in this category when you check in.



## FREQUENTLY ASKED QUESTIONS

9/8/2011 Draft

---

### How many players to a team?

Up to four.

### What's the Grand Prize for the winning team, and what's the registration fee?

\$1,000.00, and absolutely free!

### Really?

Really.

### That's awesome!

We think so.

### What assurance is there that we will have fun if we register and participate?

Your satisfaction is absolutely guaranteed, or the event sponsors will refund triple your registration fee (see "registration fee," above).

### How do we register our team?

By going to [www.warrencountygreatrace.com](http://www.warrencountygreatrace.com). You could also try showing up and registering at 7:30 on the morning of the race, but we make no promises about our ability to accommodate late arrivals.

### Has late registration been a problem in past years?

Yes, a bit. In past years more than half of all team registrations came across in the final 72 hours before the Race. This makes it very hard to plan the logistics. While we expect to be able to accept registrations right up until 8:30 the morning of the event, we might need to shut them off if we get too many in the final hours and days, and if accepting additional participants would ruin the fun for everyone else. Please have mercy and help us out by getting your team registered today, and encouraging your friends and family to do the same.

### How does check-in work on the day of the race?

Every team needs to be registered and checked in at 218 Liberty St no later than 8:30 on the morning of the race. You can check in as early as 7:15. Come prepared with waivers already printed out and signed (you can download them from the website). In past years we've had long

---



## FREQUENTLY ASKED QUESTIONS

9/8/2011 Draft

check-in lines, so don't count on arriving at 8:20 on Saturday morning thinking you will necessarily have time to get checked in.

### Will there be early check-in the night before, like last year?

Yes. We will do early check-ins between 5:00 and 7:00 on Friday evening. We strongly encourage your team to check in on Friday evening if possible. Just bring us signed waivers for your whole team, plus anything else you want to give us. Then you can just show up by 8:30 Saturday morning. Once again, please come prepared with waivers already printed out and signed (you can download them from the website).

### When we check in will we need to tell the Taskmaster checking us in how many times each of our team members has participated in a past Warren County Great Race? Is it important that we get the number right?

Yes – just give the total. In other words if two team members participated in all four prior years, one team member in just one, and the fourth is a newbie, then your total is 9 (4+4+1+0=9). Yes – it's important that you get it right.

### How do we start the Race?

At approximately 9:00am on Saturday, September 10 an event will happen, and the lunacy will begin. Make sure your correct team member is wearing his or her stickers as instructed – if not, you'll rapidly fall behind.

### Is there an official ending time to the Race?

The winning teams will be announced, and the prize money will be forked over shortly after 5:00 back at the starting location at 218 Liberty St. We'll probably do the closing in the back parking lot.

### Will there also be a prize for best thneed?

Yes.

### How will the day's events flow?

There will be a series of different manned stations situated throughout Warren County. At various points throughout the day you will be given clues or puzzles to help you find the stations. You may be required to successfully complete one or more challenges to the satisfaction of the



## FREQUENTLY ASKED QUESTIONS

9/8/2011 Draft

Taskmaster at each station in order to successfully move on. In other instances, the station itself may be a puzzle that, once solved, provides the clue to the next station.

Is it true that most meteorologists agree that the Great Race is a direct cause of predictably perfect late-summer weather?

Yes – the Great Race is just that awesome.

Will we need to demonstrate, to the satisfaction of the Taskmaster, that we legitimately solved the puzzle or clue to gain admittance to each station?

Yes. Simply following another team or randomly stumbling on a station won't do.

Where is Station C located?

In the basement of the McKissock building. You'll enter through the back, under the awning. You can attempt to gain admittance any time after you have your clue packet, but you'll need to correctly answer a question or two before the Taskmaster will check you in.

What is the Passport, and how will it work ?

Your team will be given an official 2011 Great Race Passport when you check in. Taskmasters will periodically punch your passport so you can prove that you successfully completed the required challenges, and you will periodically be asked to show your passport to prove that you completed the earlier challenges to gain entry to some stations. You cannot complete the Race without showing all punches on your passport to prove that you completed all challenges.

Do we need to check in and out with the taskmaster at each station as we arrive and depart?

Yes. When checking in you'll need to have your passport inspected. When checking out, the taskmaster will punch your passport to prove that you legally completed the station. There will be no need to have your passport punched until arriving at the first station *after* you have purchased your Clue Packet. Thereafter, unless the taskmaster specifically tells you that there is no punch needed for this station, you are responsible for ensuring that you get your passport punched before leaving any manned station. Your Passport must be in order to complete the Race.

For the stations where we get our passport punched as we check out, will the Taskmaster also give us something useful?



## FREQUENTLY ASKED QUESTIONS

9/8/2011 Draft

Yes. For these seven stations, make sure you get your useful thing when you check out. If the busy Taskmaster forgets, and you leave without reminding him/her, it will greatly impede your progress.

### What if we get stuck?

Be resourceful. Ask a local for help. Call your mom. Google it. Don't get frustrated if something seems too hard, or if you don't think you're doing well. Some of the puzzles are intentionally designed to be extremely challenging, while others are more straightforward. After years of putting these events on, we've learned that the winning team often has no idea how well they're really doing relative to other teams until their victory has been announced at the end. We expect all teams to experience periods of frustration along the way.

There will be a public hint board at Mission Control (Liberty St side) that may or may not be updated occasionally throughout the day with hints and other potentially useful information. If you feel stuck, there's a decent chance it may contain critical information to help you with your current challenge. Other than this single information source, we will not be feeding you with specific hints or clues through any other mechanisms throughout the day.

If you don't want a hint, and you prefer instead to work through it yourself, don't look at the whiteboard at Mission Control. If you do want a hint to a particular puzzle, and there isn't one there, you can hand in one of your "Hint Please" cards to vote for a hint on the one that has you stuck.

### How do we complete the Great Race?

By successfully completing all challenges, and then finding the Once-ler and paying him his fee.

### Where does the Once-ler lurk?

Not tellin'.

### How much is the Once-ler's fee?

We're not gonna help you with that one either.

### What if it's getting close to 5:00 and we're not done yet?



## FREQUENTLY ASKED QUESTIONS

9/8/2011 Draft

All Taskmasters will be closing up shop early enough to make it back to Mission Control in time for the awards ceremony. You should assume everything will be shut down by roughly 4:30, depending on distance from Mission Control.

### Can we earn bonus points?

Potentially, yes. If, in the course of the day you do anything that particularly impresses (or perhaps flatters) the judges or taskmasters, they may give you a card with a number of points printed on it. You must write your team's name on the bonus card in pen immediately when you receive the card. When you check out at the end of the day upon completing the race, you will hand in all of these bonus cards when your final score is tallied. Bonus points cannot be transferred from one team to another. You might also begin the day with a few bonus cards, which you can either keep until the end of the day, or perhaps trade in to a Taskmaster for some other consideration.

### Who tabulates our bonus points?

You do. When you cross the finish line at the end of the day, you are responsible for giving the Once-ler a complete and accurate tally of all of your bonus points earned during the day. Tabulate your bonus points and write the total on the back of your Passport and hand your Passport in along with all bonus cards and any other supporting information for validation purposes. We will double-check the scores only for the winning teams before the awards ceremony. Any inaccuracy or incompleteness in your team's final self-tabulation of bonuses will result in disqualification.

### How do Flattery Points work?

Each Taskmaster starts the day with a small number of "Flattery Cards" worth two bonus points each. They are free to give their cards to any teams they wish, for any reason at all, at their sole, individual discretion. There is no limit to how many of these cards your team can accumulate during the day.

### So how do bonus points affect our final finish time?

They don't. Unlike past years, this year there is no translation (direct or indirect) between bonus points and time. Your finish time is the time when you finish. Period.

### So do bonus points matter? Do they affect the final outcome of the Race?



## FREQUENTLY ASKED QUESTIONS

9/8/2011 Draft

---

Yes. Yes.

So how do bonus points influence the competitive outcome?

We're not tellin'. We'll just say that it will be difficult to win without taking the accumulation of bonus points seriously during the day.

But the first team to finish is the winning team ... right?

Yes. Well, sort of.

So why the mystery? Why won't you just tell us how bonus points work?

It's supposed to be fun. If you have your shorts in a knot over the details, then you're taking it all way too seriously. Plus, to tell you the truth, we're kinda amused by all the quasi-conspiracy-theory stuff floating around out there from last year, and we get a certain small guilty disbelieving pleasure out of watching it all.

Any advice for the people who are all wound up about the injustice of any of this?

In order for your medication to be effective, you need to remember to take it every day like the doctor told you. If you've suffered more angst over this than over, oh I don't know, the federal debt crisis, then maybe the Great Race isn't your cup of tea.

How 'bout if we make real nice-like and ask Matt on Race day how bonus points work when he has a minute to spare, will he tell us?

Maybe.

How about the other Taskmasters – will they tell us? Do they even know how the bonus points work?

Nope. Nope.

You really **are** enjoying this, aren't you?

☺

What about parking throughout the day?

---



## FREQUENTLY ASKED QUESTIONS

9/8/2011 Draft

At some locations there may not be sufficient parking precisely at the station itself. In all cases, you must park legally and safely, and in such a manner as to not block access or the exit of any other vehicles. This may involve parking farther from the station than you might ideally prefer, and walking for a few minutes. In some cases, the station is located on private property with the generous permission of the landowner – please be appropriately respectful of private property. Poor parking or driving etiquette, or any kind of aggressive or generally anti-social behavior involving a vehicle is a great way to get your team immediately disqualified from the day's fun.

Is it true that just as in past years, you have notified the local police and requested that they set up speed traps at specific locations that would be highly likely to nab any teams that choose to act in the aggressive or generally anti-social manner described above?

Yes.

Were they receptive?

Very much so, and we appreciate it.

How should we behave towards the Taskmasters?

Be nice to them. Flatter them.

Will it help?

They'd sure appreciate it!

Would it be okay if our whole team came dressed in our team uniform, t-shirt, face and/or body paint or other creatively elaborate garb?

I'm sure we would find that most flattering!

Should we be prepared to get dirty and/or wet?

Most definitely.

Is the Warren County Great Race Facebook fan page a good place to begin venting our pent-up over-the-top enthusiasm for and excitement about this year's event?

Yes.

Anything we should bring?



## FREQUENTLY ASKED QUESTIONS

9/8/2011 Draft

The following items may or may not be of value to you:

- Resourcefulness
- Transportation
- A good map of Warren County
- A really good map of downtown Warren
- Costumes
- Eye protection
- Blindfolds
- A strong desire to win
- Lunch
- A stick of butter and a good understanding of proper Zook dining etiquette
- Superior powers of observation and recall
- A team spirit that impresses, or maybe even flatters the judges
- Good weather

How should we behave if we arrive at a station to find it absolutely glutted with a huge number of other teams, and an insufficient number of taskmasters struggling to maintain order and keep things moving along?

With the highest level of courtesy, and sportsmanlike etiquette. Despite our best efforts, it always happens at some point during the day. Hey, we're amateurs – give us a break!

Any advice on how we can get disqualified, disgraced and publicly declared to be lame?

By breaking any law, or demonstrating any behavior that, in the opinion of any Taskmaster, is unsportsmanlike or otherwise violates the spirit of the Great Race.

What if we find ourselves not having fun at any point in the day?

Stop playing and go do something fun. We'll all have more fun that way.

What are the chances that everything will go smoothly on Race day, and the Taskmasters will make no meaningful mistakes, and that everyone will agree that the outcome was completely fair and reasonable?

0.00%.



## FREQUENTLY ASKED QUESTIONS

9/8/2011 Draft

---

On that note, is it true that last year at the awards ceremony some idiot stood up and announced the top 3 winning teams in the reverse of the correct order, awarding the \$1,000 cash to the third place team and handing the winning team the 3<sup>d</sup> place trophy?

I have heard that rumor, and the video footage seems to confirm it.

How could anyone possibly be so stupid?

Years of training.

Speaking of stupidity, what happened to last year's results for the rest of us who didn't place? Didn't you say you would tally and post the results at some point?

We lost the manila envelope containing all the stuff teams handed in that we needed in order to tabulate results. Our guess is the janitor threw it out.

What are you, a bunch of amateurs?

Yep.

How do we know it's not a conspiracy of some sort?

Uh oh. They're on to us.

What if we participated in the past and didn't have fun?

You should probably play it safe and spend the day doing something fun instead. We don't want to be responsible for anyone having less fun on Sept 10 than they otherwise might.

Is it true that at last year's event someone broke her leg while attempting (unsuccessfully) to crawl into a dumpster?

That's what I heard.

What on Earth was she thinking?

We can only imagine.

Have you heard the rumor that she's returning again this year, and if so, what is her rumored 2011 team name?

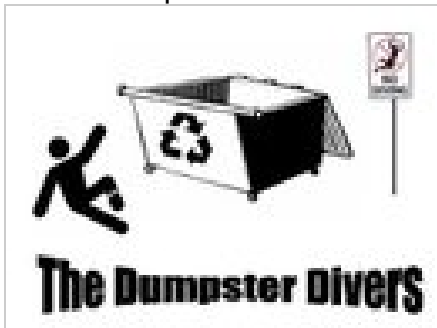
---



## FREQUENTLY ASKED QUESTIONS

9/8/2011 Draft

Yes. "Dumpster Divers!"



*That's Awesome!*

Yeah!

*How do we complete the Station C challenge?*

Look but don't touch, climb or remove anything. Whisper the correct sum of the little noisy things into the ear of a Taskmaster. Random guessing will be punished.

*How about a helpful hint to get practiced in the kind of thinking that will be useful to us on Race day?*

Americium, Argon, Nitrogen, Silver.

*How does the black dot work?*

When your team checks in, either Friday night or Saturday morning, you will be given a single black-dot sticker, plus another sticker with a number on it, and you will be told which team member is to wear these. That team member (and only that team member) must be wearing both stickers on his or her forehead from the opening event until your team earns their clue packet. At different points in the morning the black-dot-wearing team member will be given access to a special secured area, that non-black-dot-wearing team members are forbidden to enter.

*How do we get our First Clue?*

The whole team needs to go to the First Clue desk and present one coin for each member of your team during the opening event.



## FREQUENTLY ASKED QUESTIONS

9/8/2011 Draft

---

### How do we earn coins?

By locating the other three members of your clan, and reporting to the Clan Check-In Desk.

### Once the Race gets underway, how will we get our Clue Packet?

You can purchase it at Mission Control where the opening event happened.

### What's the price of the Clue Packet?

\$1,000,104.17

### Is that denominated in \$US Dollars, or Great Race Dollars?

We'll accept either currency, but correct change only please.

### Any advice on how we can earn Great Race Dollars?

Find THE SIX THINGS.

### What about the opening event/puzzle this year, will it be more challenging than in the past?

Yes. It will take some more time, thought and work to earn your Clue Packet than in past years. When you're feeling frustrated, remember that most of the other teams are feeling it too. Keep at it.

### What was Tracy's initial reaction when Matt shared his vision of the opening challenge, and asked her to go work it out and make it happen?

She said: "I'm worried about the opening. I think it's gonna go out of control and be total chaos."

### What did she think after having a few weeks to work through the details?

Unchanged.

### If we're in a public area with a lot of other teams trying to solve a puzzle, and we finally get the correct answer and just blurt it out so that other teams can overhear our solution, are we lame?

Yes. Try not to do that. It is forbidden to collaborate with other teams.

### Will this year's event benefit any worthwhile causes?





## FREQUENTLY ASKED QUESTIONS

9/8/2011 Draft

Yes – we will be conducting a local food drive. Also, we'd be pleased as punch if we could raise some constructive interest in (not to mention some cash for) the Majengo Orphanage in Tanzania (one of Ian's & Matt's pet projects).

How can we participate in the food drive while also maybe helping our chances of winning the Race?

By bringing all the canned and other shelf-stable food you can get your hands on, and donating it prior to the start of the Race on Saturday morning. Don't bring food on Friday evening.

How will you exploit our enthusiasm for winning the Great Race to benefit the Majengo Orphanage?

A few different ways. First, we will encourage you to go to the orphanage web site at [www.majengo.org](http://www.majengo.org) and scour its contents in hopes of finding clues or other useful information, and we suggest additional materials for those who want to learn more. By suggesting that we might bury useful Great Race information deep within these sources (regardless of whether we actually bury said information), we exploit your desire to win the Race by forcing you to familiarize yourself with the project, ever so gradually reprogramming your brain to make you want to lend a hand to ensure that our Majengo kids continue to have a future to look forward to. Also, we will suggest that if you print out the one-page donation form at [www.majengo.org](http://www.majengo.org), and hand it in along with your team's donation to the Warren Majengo Foundation on the morning of the Race that would be just **AWESOME!**

How much money did Great Race participants donate to the orphanage project during last year's event?

About \$2,000.

How many children were there at the Majengo Orphanage last year at this time?

56.

How many do you have now?

114.

How can we get caught up with events at the orphanage since last year?



## FREQUENTLY ASKED QUESTIONS

9/8/2011 Draft

Two things:

1. Watch the 30-minute talk Matt gave locally late last year as we were working to rescue the additional children. Go to YouTube and search "Matt Majengo" and it should come up.
2. Read the update email Lynn Connell sent to all donors a few weeks ago. Not posted anywhere yet, but send Matt an email if you want to see it.
3. Read Lynn Connell's Blog (lengthy but complete): [www.lynnconnell.blogspot.com](http://www.lynnconnell.blogspot.com)

Wouldn't it be just supremely awesome if we reached a point where the Great Race raised enough each year to fully support all of these kids?

Indeed it would!

What if I wanted to transform the life of one child, elevating him or her from the worst, most hopeless circumstances imaginable to a world that offers all of the security, stability and opportunity one could reasonably ask for – what would it cost to singlehandedly sponsor one such child for a year through the Warren Majengo Foundation?

About \$650.

How much is that per day?

\$1.78.

Is it tax deductible?

Of course.

Is there a recommended donation amount for Majengo from Great Race participants?

Yes. We recommend that your team agree to sponsor one child for the year. For a team of four, that's 44¢ a day for each team member, all tax-deductible, to transform the life of a child. If a handful of teams were to accept this financial burden that would be unspeakably awesome!

What about for the rest of us who are just shooting for "awesome," but who can't necessarily afford "unspeakably awesome?"



## FREQUENTLY ASKED QUESTIONS

9/8/2011 Draft

We'd love to see each member of your team donate \$25 if you are able, and if not, at least \$25 from the whole team would be appreciated.

Will there be tiered time bonuses for teams, tied to the level of donation to Majengo?

Yes. Using the preceding few questions as rough guidance, the more your team donates to Majengo the bigger the time bonus your team will get. The teams who pony up will definitely gain a small, but not at all unfair performance advantage.

What if we choose not to make any donation at all?

We want all awesome people out there to play and have a blast. If you can't afford a donation or simply choose not to, that's not a problem. All donations to Majengo are completely optional.

Is it true that you and other local volunteers have been publicly criticized by some who disapprove of your active and public support of the Majengo Orphanage?

Yes.

Any words for those critics?

No – I want to preserve the family-friendly G rating of the Great Race.

Any chance that our specific familiarity with any of the preceding Majengo information resources will actually help our Great Race performance in some small way?

Sure. We're unapologetically self-serving (well, Majengo-serving I suppose) that way.

Is that it? Are you done using the platform of the Great Race to evangelize about the orphanage project?

Sure ... for now.

Will it be possible for our team to win without going off of our collective Atkins diet for the day?

No.

Is there a theme this year?

Yes. Dr. Seuss.

---



## FREQUENTLY ASKED QUESTIONS

9/8/2011 Draft

---

### How many people participated in each of the past years' Great Races?

2007 – ~100  
2008 – ~200  
2009 – ~280  
2010 – ~300

### How many are you hoping for this year?

400 would be nice. At around 500 we'll probably run into capacity problems, so we'll likely stop taking new registrations soon after we hit 400.

### Will our team receive any advantage if we get other teams to register and participate, and they cite our team's name when they register?

Very possibly, but if they do not mention your team's name when they initially register, you will definitely *not* receive any benefit.

### Who are the Sponsors of the Great Race?

McKissock and the Youngsville Pharmacy.

### Why are you guys doing this?

Since around 2002 the team at McKissock, with the generous assistance of the Youngsville Pharmacy (a.k.a., Ian Ashbaugh), have had a blast putting on our own annual company event in the same vein, in lieu of a more traditional summer company picnic. We finally decided that it was way too much fun to keep to ourselves, and in 2007 we decided to do this as our annual gift to the local community. Collectively we have almost 50 people who have worked their fannies off (exclusively on a volunteer basis) to put on an event that we and the entire Warren County community can be proud of.

### What can I do to help?

Tell everyone you can think of about it, and get them to register a team and have a blast along with the rest of us. We love living in Warren County, and making this a truly great and successful annual event - the kind that others will travel from afar to participate in - is one fun way we can do our part to make it an even better place.

---



## FREQUENTLY ASKED QUESTIONS

9/8/2011 Draft

Also, please donate generously to the Majengo Orphanage and encourage others to do as well. The financial support generously donated each year towards Majengo has been critical, and Majengo's financial position is far less certain right now with more than twice as many children as we had a year ago. When all else fails and we're wondering if we have the time to pull off the Great Race for another year, it is very motivating to be reminded of the money the Majengo kids will miss out on if we lose the chance to pass the hat again on Race day.

Should I write a Letter to the Editor for the WTO and Post Journal, going on at length about the awesomeness of the Great Race and encouraging people to sign up?

If you feel so inclined.

Do you enthusiastically encourage spontaneous, creative and public displays of Great Race enthusiasm and support in all their glorious forms?

Most Definitely!

Are you suggesting that we should surprise and impress you with our own creative, over-the-top publicity stunt to get the word out, express our enthusiasm and spread the lunacy between now and Race day?

Absolutely!

If we do something like that should we use the Facebook page to show everyone else how we're so much more into it than they are?

Definitely.

How many clues or other useful tips are buried in this document?

Difficult to say.

How can we bask in the warm and comforting glow of the general awesomeness of the Taskmasters even after the Race is over on Saturday, and maybe even get a good start on next year's flattery?

Approximately 30 Taskmasters will be dining at Ribs-n-Bones starting at 6:30 Saturday evening. Good luck getting a reservation.



FREQUENTLY ASKED QUESTIONS

9/8/2011 Draft

How many 2012 Great Race Flattery Points will be awarded to the team or teams that step forward to develop and hold a complementary/competing winter Great-Race-like event this year so all of the current Taskmasters can play for once?

~1.2 Gazillion.

Is this the final FAQ?

We think this one is probably the final one, or really really close. Just to be safe you might want to check the web site again Friday evening.

OTHER IMPORTANT AND/OR INTERESTING STUFF

